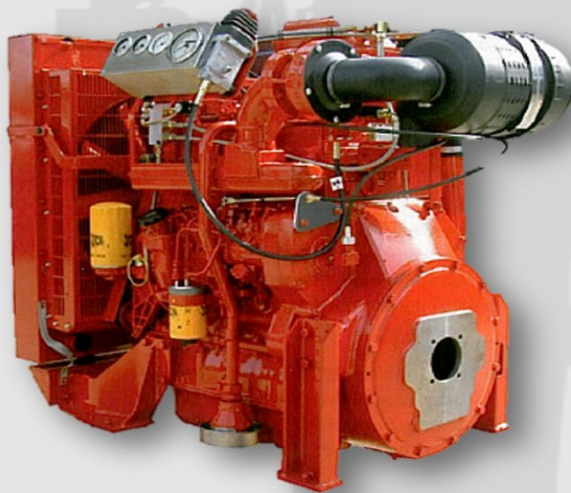




YANMAR Flame Protected Engine

Tomorrow's Engine Today



ZONE 2 FLAME PROTECTED ENGINES

Diesel engines operating in Zone 2 hazardous areas present a risk of explosion - the total solution for diesel engine safety begins here.

The Power Torque Range of Flame Protected Diesel Engines operate below 200°C. This lower operating temperature, combined with additional shut down features, means that Power Torque engines are designed to be used in areas where there is a strong potential explosion hazard.

Power Torque's range of flame protected engines are designed specifically to meet the European ATEX Directive Zone 2 requirements

The units are therefore particularly suitable for the following applications, in Zone 2 classified areas:

Oil and Gas

Paint, chemicals and solvents

Dust

Pharmaceuticals

Airfields

Munitions Stores



WEB: www.austutilities.com.au
EMAIL: sales@austutilities.com.au

PHONE: 08 9406 3200